

THE FURMAN FORUM

OFFICIAL NEWSLETTER OF FURMAN L. TEMPLETON PREPARATORY ACADEMY

Ladaisha Ballard, Principal


Randolph Scott, Assistant Principal

Rosalind Lockwood, Executive Director

Wanda Best, Board President



Follow Us On Social Media:

 Instagram: @FLTempleton

 Facebook: Furman L. Templeton Preparatory Academy

 Twitter: @FLTprepacademy

Our Mission

To accelerate the opportunities and outcomes for our children by demanding nothing but excellence from the students, staff, and the community.

Our Vision

Accelerating the academic achievement of all students, in partnership with the entire community, to ensure that students have the attitudes, skills, and proficiencies needed to succeed in college and in the 21st century global workforce.



This Issue

Important Updates & Dates
PAGE 01

Principle's Corner
PAGE 02

Topic Highlight
PAGE 03

GAL & Intervention
PAGE 04

Mental Health Minutes
PAGE 05

Announcements, Events,
and Resources
PAGE 06

IMPORTANT DATES

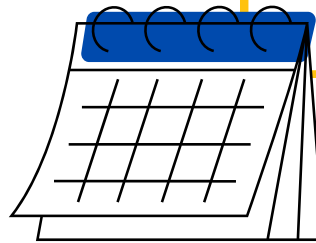
December 21st - January 2nd
Intercession Day / Winter Break
School Closed

January 3rd
Professional Development
School Closed for Students

January 15th
Martin Luther King Day
School Closed

January 19th
Early Release Day for Students

January 19th - January 23rd
Report Cards Distribution Window



Upcoming Events

WINTER SHOWCASE
DECEMBER 19, 2023
5PM
FLTPA AUDITORIUM

WINTER FESTIVAL
DECEMBER 18TH - DECEMBER 20TH

SCHOOL MATH FACT BEE
DECEMBER 19TH




Furman L. Templeton
Preparatory Academy
Presents:

Winter 2023 Showcase


FEATURING A STUDENT TALENT SHOW
AND ART GALLERY.

December 19th, 2023
Time: 5:00 PM
Furman L. Templeton Preparatory
Academy Auditorium



MATH FACT BEE

K - 5TH GRADE



CLASSROOM BEES: DEC 11 - 12
SCHOOL BEE: DEC 19

**PRACTICE THE MATH FACTS FOR YOUR GRADE LEVEL
TO EARN A SPOT IN THE SCHOOL MATH BEE!**

Kindergarten - addition and subtraction facts
that include any number between 0 and 5

1st Grade - addition and subtraction facts
that include any number between 0 and 10.

2nd Grade - addition and subtraction for any
number between 0 and 20.

3rd - 5th Grade - all operations for any
number between 0 and 10.



WINTER FESTIVAL

DECEMBER 18 - 20TH

Monday
Ugly Sweater Day

WEAR AN UGLY WINTER
SWEATER TO KICK OFF OUR
WINTER FESTIVAL

Tuesday
Math Bee

SCHOLARS THAT PLACED IN
THE CLASS MATH BEES WILL
PARTICIPATE IN THE ALL-
SCHOOL MATH BEE

Wednesday
Pajama Day

WEAR PAJAMAS AND
PARTICIPATE IN CLASS
ACTIVITIES FOR OUR LAST
DAY BEFORE BREAK



*CLASS ACTIVITIES/PARTIES ARE AT THE DISCRETION OF THE CLASSROOM
TEACHER. TALK TO YOUR SCHOLAR'S TEACHER FOR MORE INFORMATION.

VERSIÓN EN ESPAÑOL EN FACEBOOK Y EN EL SITIO WEB DE LA ESCUELA

Principal's Corner

Dear FLTPA School Community,
Welcome to the first edition of the Principal's Corner for the 2023-2024 School Year. I am excited to share with you the wonderful achievements and important updates from our elementary school. In this edition, you will find valuable insights, news, and resources to help us work together to provide the best education for our students.

I am proudly kicking off the school year with major highlights, achievements, and celebrations. Students made progress across Spring 2023 assessments on MCAP and MISA which helped us start this school year off with higher percentages of proficiency. While we have a long way to go, steady improvements are proof that our systems, goals, and next steps have been pointing us in the right direction. So far this year, we should also note an average of 91% student attendance every day. This is not an easy feat, but truly a requirement in order for students to learn and achieve.

There have been some remarkable accomplishments of our students as well. Students in grades fourth and fifth grade were identified as new MCAP Squad members based on the levels of proficiency on last year's assessment. We also added new "Recruits" for all students in grades 2-5 who scored 60% or higher on the beginning of the year grade level ANET assessment. Celebrating positive mindsets, hard work, and effort is key to improving student confidence and will to learn. Each month, we are also celebrating an epic amount of students based on their ability to consistently show our school rules of being safe, respectful, and responsible. They have earned Eagle Bucks to shop at the store and participated in fun-filled monthly PBIS celebrations.

As always, we are looking for new ways and tips on how parents, guardians, and community members can actively participate in our school. Visiting the classroom, attending meetings, and supporting events are just some ways to engage in daily learning. Each month during our Community Town Hall, we are also sharing data points and strategies to intentionally support school-wide goals and student growth.

The first quarter has quickly come to an end. Like all quarters, student learning closes with report cards and beginning of the year assessment reports. Taking a deep dive into this information helps our school's leaders and educators plan instructional programming while partnering with students, families, and community members. As we move forward into the next quarter, we are excited about the opportunities and experiences that await our students. Together, we can continue to create a supportive and engaging environment for our young learners.

For the latest updates and news throughout the quarter, follow our school websites, social media, and other communication channels.

Thank you for your dedication to the success of our students and the strength of our school community. We look forward to another fruitful quarter of learning and growth.

Warm regards,
Principal Ballard



“People working together in a strong community with a shared goal and common purpose can make the impossible possible.”

TOM VILSACK

Topic Highlight

SAFETY IT TAKES A VILLAGE!

We all want to have a feeling of safety everywhere. Safety is the state of being free from harm, danger, or threats in a physical, emotional, and psychological sense. At Furman L. Templeton Preparatory Academy, we strongly believe that safety is essential for the physical, emotional, and academic well-being of all students. It ensures that children can learn, grow, and thrive in a supportive and secure environment, which is a fundamental part of their education and development.

Educational experts stress that student safety should be a top priority of all school stakeholders.

The safety and well-being of our students, staff, and families are the top priorities of FLTPA. We understand that in today's ever-changing world, ensuring a safe and secure environment is not only our responsibility but also our collective commitment. By working together, our stakeholders can create a safer environment for FLTPA, ultimately ensuring the well-being and security of students, staff, and the entire school community.

An unsafe learning environment, or the perception of being in an unsafe learning environment, can have a profound impact on a student's overall well-being. This unsafe feeling or perception often has a negative impact on the student's academic performance because they are distracted and not focused on their academics.

Our team has worked diligently to create and maintain a positive school climate because we understand that a positive school climate can reduce negative behaviors, such as bullying and harassment. Such a climate fosters an environment where all members of the school community understand the importance of the physical and emotional health and safety of all students.

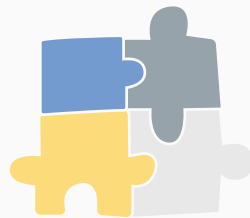
Research indicates that when community organizations and local government agencies partner with schools to provide resources and support, then the feeling of student safety extends beyond the school building. Students benefit from this partnership because they feel a connection to the school community outside of the walls of the school building. We have witnessed this with so many students at Furman and we are looking forward to more students displaying the confidence and the connection to the school and the community.

It does take a village! When the village works together, the future of our students are bright.



INTERVENTION

Welcome back to another exciting year at FLTPA! This year we have adopted a new baseline assessment for math. The assessment is called NWEA Measures of Academic Progress. The assessment starts at grade level then adjusts by giving less difficult or more difficult questions based upon student responses. The purpose of this assessment is to identify what math skills the students currently have. We are continuing to use Amplify and MClass for guided reading levels and for reading fluency. The assessments are used to identify skills students are missing and need reinforcement for and areas where students are proficient and need to be challenged more. Students that are missing skills will receive intervention in the classroom or as a pull-out group by the interventionists. The parents of students identified for intervention services will be notified via letter. Students that are identified for the intervention program will receive support daily in reading and/or math from an interventionist. All referrals for intervention will go through the Intervention department. If you have any questions, please see Mrs. Benton.



Gifted and Advanced Learning (GAL)

Students that are high performing and demonstrate a need to be challenged in certain areas, may be eligible for additional support through the Gifted and Advanced Learning (GAL) program. Last year, we had 26 students in the GAL program in grades K through 5. Of those 26, 19 were formally identified as Gifted, Advanced, or Talent Development Learners. This year, we have 25 students, 17 of which are formally identified. All students in Kindergarten take the Naglieri Non-verbal Ability Test (NNAT3) to formally identify students for gifted and advanced programming. All K students will be assessed after completing a set of lessons about analogies and patterns. The lessons will expose the students to activities similar to those that they will complete on the assessment. If you need more information about our gifted program, please see our school website! If you would like to know more about how to support your child at home, do not hesitate to ask! Mrs. Benton is available on Wednesdays to provide support for families. Please contact her by email at klbenton@bcps.k12.md.us or call 443.836.6439 to schedule an appointment.

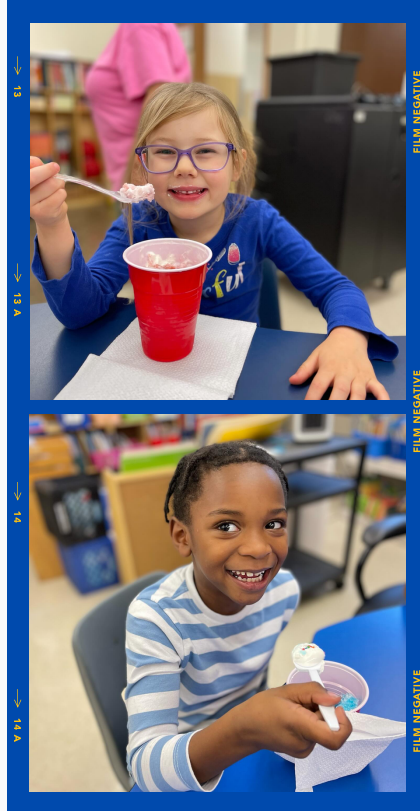
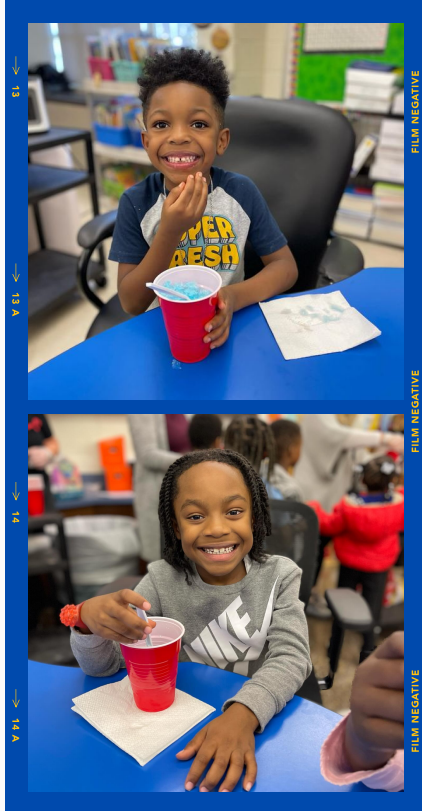


MENTAL HEALTH MINUTES

Meet the Mental Health Team

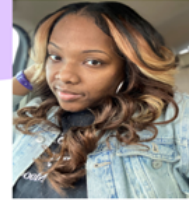
- Lead- School Social Worker-Mrs. Rose, LCSW-C
- School Counselor- Mrs. Pierre-Louis
- School Psychologist-Mrs. Arkoi-Decatus
- Villa Maria Social Worker-Mr. Bartoloni, LMSW
- Early Childhood Mental Health Consultant- Mrs. Callahan, LCSW-C
- Wholeness Specialist- Mr. Jones

The mental health team has begun serving groups and individuals in all grade-levels based on our DECCA and DESSA data. We have availability for parents to self-refer students for additional support as well by calling Mrs. Rose at 443-836-6444 to discuss your child's needs. We are excited to continue to support all students through our daily wellcheq questions and our 60 tier II and tier III students through our expanded services.



PBIS SMILES FROM FURMAN SCHOLARS

GREETINGS FROM YOUR COMMUNITY SCHOOL COORDINATOR



Greetings FLTPA School Community,

My name is Natarsha Jackson and I am absolutely honored to serve as Furman L. Templeton Preparatory Academy's Community School Coordinator. I am excited to have the opportunity to work with you and your families this school year.

I have a passion for serving students and families to ensure that they reach their full potential and are successful in achieving their goals. My background includes over 10 years of experience in connecting families and students to resources through family and community engagement.

As a Community School Coordinator, my focus will be attendance, community partnerships, and family and community engagement. My goal is to provide various resources to eliminate barriers to attending school daily and on time. I will also work in collaboration with the school staff to provide meaningful family engagement opportunities to bridge the learning environment in school to the home setting with parents. Lastly, I will collaborate with community partners and stakeholders who share like interests of seeing families and students succeed to ensure that resources are available. I look forward to working with each and every one of you. Please feel free to reach out to me using my contact information below.

 njackson@childfirstauthority.org
 443-836-6437

Office Hours: Tuesday/ Thursday 2:30p.m.-3:30p.m

Office Location: 116

Best Regards,

Natarsha Jackson



Partnerships at FLT

- Child First
- Chicago Parent
- Catapult Learning
- Stanley Snacks
- Sharp Street Memorial Church
- YMCA
- B'More for Healthy Babies
- Promise Heights
- Little Flowers
- Breath Mobile
- UMB Community Engagement Center

THE CHILD FIRST TEAM AT FLT

NATARSHA JACKSON, COMMUNITY SCHOOL
COORDINATOR
443-836-6437
NJACKSON@CHILDFIRSTAUTHORITY.ORG

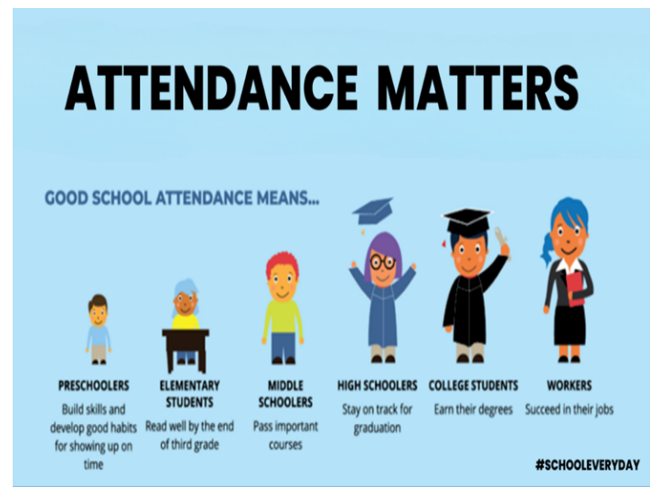
DENIA PAYTON, OST COORDINATOR
443-836-6434
DLPAYTON@BCPS.K12.MD.US

NIKITA ROLLINS, PARENT INVESTMENT
COORDINATOR
443-836-6433
NROLLINS@BCPS.K12.MD.US

Community News & Resources

Attendance Updates

August/ September Highlights: In August we had a total of 202 students and in September 160 students achieved Perfect Attendance. They were celebrated with a field trip to a college volleyball game, snow cones parties, and a chance to win tickets to an Orioles game. Congrats to the parents and students who ensured they were present daily.



Attendance Percentages

	Target/Goal	Aug	Sept	Oct	Nov
Pre K	94%	94.30%	90.40%	89.32%	84.48%
K	94%	93.53%	91.46%	93.10%	89.90%
1st	94%	89.26%	90.36%	90.09%	87.70%
2nd	94%	91.35%	88.88%	90.71%	86.22%
3rd	94%	90.06%	90.86%	92.68%	90.26%
4th	94%	88.80%	89.51%	92.00%	88.17%
5th	94%	92.98%	92.85%	91.98%	91.55%
Total Average	94%	91.24%	90.59%	91.47%	88.37%



Food for Thought: Remember that each day students attend school they are receiving valuable lessons and instruction that prepares them for the next skill or content area. Missing a day or two from school here and there may not seem to have an impact, but those two days a month equal to missing 10% of the school year and up to 60 missed lessons. Be sure to communicate with your student's teacher or the main office staff when your child is ill, family emergencies arise, and try to schedule all medical appointments after school or during school closures.

COMMUNITY TOWN HALL DATES

JANUARY 8TH
FEBRUARY 5TH
MARCH 4TH

5PM (VIRTUAL)
TBD
TBD





- ✓ Are you at risk for eviction?
- ✓ Do you have a cut-off notice for your gas or electric?

We're here to help!

Apply for Emergency Assistance to Families with Children Grant (EAFC)



To Qualify for EAFC Grant:

- ✓ Must be a Baltimore City resident
- ✓ Must have a child living in the home that is 21 years old or under
- ✓ Have not received an EAFC grant in the last 12 months
- ✓ Can qualify for up to \$2,000 for a single emergency, and up to \$5,000 for two different emergencies happening in the same month

How to Apply? Apply online: Go to **MyMDTHINK** website:

<https://mymdthink.maryland.gov/home/#/>



You do not have to be an existing customer. Visit us at any of our centers:

Northeast Regional FIA Center
2000 N. Broadway
Baltimore, MD 21213

Harbor View FIA Center
18 Reedbird Avenue
Baltimore, MD 21225

Penn-North FIA Center
2500 Pennsylvania Avenue
Baltimore, MD 21217

Dunbar-Orangeville FIA Center
2919 E. Biddle Street
Baltimore, MD 21213

Hilton Heights FIA Center
500 N. Hilton Street
Baltimore, MD 21229



BALTIMORE CITY PUBLIC SCHOOLS

DISTRICTWIDE Math NIGHT FOR FAMILIES

City Schools is hosting a Math Night to help students become more successful in math!

The Great Math Scavenger Hunt
Tuesday, December 19, 2023
5 to 8 p.m.

The Maryland Science Center
601 Light St, Baltimore, MD 21230

Join us for fun, giveaways, tools for math learning, food, and much more!

Registration Required: bit.ly/MathScavenger23
Interpretation will be available

For more information, visit baltimorecityschools.org

Baltimore City Public Schools does not discriminate based on race, ethnicity, color, ancestry, national origin, religion, sex, sexual orientation, gender identity, gender expression, marital status, pregnancy/parenting status, disability, veteran status, genetic information, age, or other legally or constitutionally protected attributes or affiliations, as outlined in Board Policies JBA, JBB, JIC, ACA, ACB, and ACD. Full nondiscrimination notice: www.baltimorecityschools.org/policies-nondiscrimination

Teachers' Democracy Project & Fort Worthington

Parents:

building resilience in a violent world

6-workshop series

5:30-7:30

Jan. 22, 29
Feb. 12, 19, 26
March 11

A \$300 stipend will be awarded upon completion

Interested?
<https://shorturl.at/bctLZ>

Interested?
<https://shorturl.at/bctLZ>

We will create a collaborative and supportive learning space where parents can share and reflect on their own stories, and practice new skills with each other and with their children.

We will discuss how the brain works under trauma and stress, the pro's and con's of different discipline styles as well as a set of concrete tools to promote healing, self regulation, connection, communication and problem solving in moments of stress.

Food and childcare provided

Fort Worthington
2710 E Hoffman St.
Baltimore, MD 21213

For more information, email: tyrone@tdpbaltimore.org
or text: 443-904-6547

Looking for a job?

"Incredible! I've been trying to find a job for a year, but working with UMB's Workforce Wednesdays I got connected to the right people. I had a mock interview within 3 weeks and now I've scored a great offer."

— SATISFIED "CUSTOMER"

WORKFORCE INITIATIVES

WORKFORCE WEDNESDAYS
TWO WAYS — IN-PERSON & VIRTUAL
Online on Tuesdays from 12noon-1pm: <https://shorturl.at/hIP39>
In-person from 2-5pm on Wednesdays
UMB Community Engagement Center, 16 S. Poppleton Street

- Get connected to FREE career training programs.
- Learn about jobs at the University of Maryland Baltimore, University of Maryland Medical Center and more
- Get help with writing your resume and doing online job searches
- Sign-up for FREE GED classes in the neighborhood

- Training programs in IT, Food Service, Construction, Green Careers, Biotechnology
- Free technology training for internet and smart phone users
- Free computer lab use with highspeed internet

workforce@umaryland.edu
410-706-1931

Our programs are offered through a collaboration with the Southwest Partnership, Inc.



OFFICE OF COMMUNITY ENGAGEMENT

umaryland.edu/occe

